



**MT 2020**

**Global Executive Committee Charter**

**November 15, 2019**

## Global Executive Committee Charter

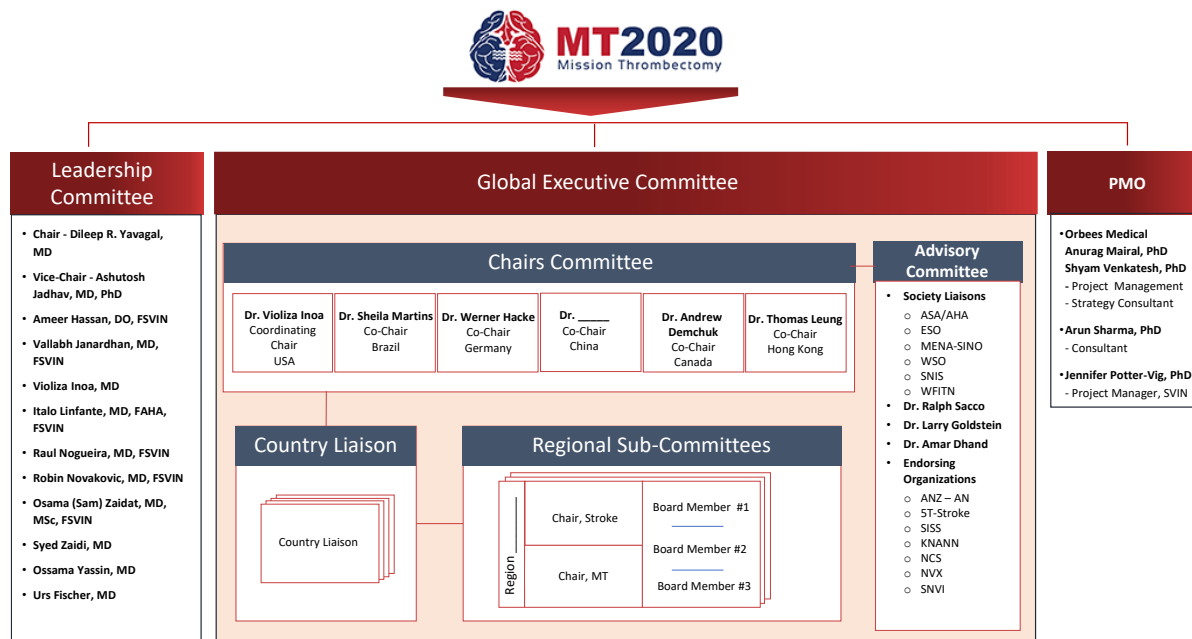
### 1. MT 2020 Mission

There are over 14 million patients that suffer from acute ischemic stroke annually. Nearly 6 million of those could potentially be treated by mechanical thrombectomy (MT) – but only about 140,000 are treated with MT, and nearly 70% of these procedures happen in the US and Western Europe.

**The MT 2020 mission is to be a global, metric-driven, umbrella campaign to reduce death and disability associated with large vessel occlusion (LVO) ischemic stroke by accelerating access to mechanical thrombectomy through:**

1. Integrating the disparate knowledge of barriers to MT access worldwide
2. Unifying multiple efforts by local and specialty societies to accelerate MT access globally
3. Globally doubling the access to MT every 2 years
4. Aiming for a goal of 202,000 MT worldwide in 2020

The above objectives are being driven forward by a global group of core stakeholders organized (see below) to plan and execute the MT 2020 mission.



### 2. Global Executive Committee

**The charter of the Global Executive Committee (GEC) will be to operationalize MT 2020 by facilitating outreach to regions around the world with annual public health interventions that will accelerate access to stroke thrombectomy. The GEC will have a matrix structure with cross-functional and cross-border roles and responsibilities to drive the MT 2020 mission forward.**

## Roles and Responsibilities

**Chairs Committee.** The GEC Chair committee will provide the overall leadership for this global outreach by coordinating with regional committees throughout the globe. The Chairs Committee will be constituted of the coordinating chairperson and four co-chairs.

**Regional Sub-Committees.** MT 2020 public health interventions will be deployed globally with specific local-level actions led by a regional committee of five members.

- Stroke Chair: heads region-specific actions addressing the stroke landscape including barriers and drivers to treatment
- MT Chair: heads region-specific actions addressing the increase of patient access to MT
- Board Members: three board members who will support the execution of the initiatives at the local level

**US Liaison.** The regional-level activities will be managed by a US-based liaison representing the various regions at the country level. For example, the US liaison for China will manage all of the regional-subcommittees of China.

## GEC Support

**Leadership Committee.** The MT 2020 leadership committee will have a “think-tank” role and will be responsible for developing and planning the initiatives in collaboration with the GEC and the Advisory Board.

**Project Management Office:** The project management office will coordinate and provide overall support to the activities of the GEC and MT 2020.

**Advisory Board.** The advisory board will be comprised of clinical, industry, and society/policy thought leaders that will provide overarching advice and direction to the GEC and MT 2020.